



# FEEL SECURE



## IP DOOR ENTRY SYSTEMS

### **7TOP and Sonus: Innovation and Style for Tailored Security.**

Door entry systems serve as the first line of security for any home, seamlessly blending control with convenience. With 7TOP monitor and Sonus, Comelit delivers cutting-edge solutions that merge elegant design with user-friendly functionality, providing modern, reliable security tailored to your needs.

# SINCE 1956, COMELIT HAS BEEN DEDICATED TO TURNING OUR VISION OF TOTAL SECURITY INTO A REALITY.

## A Legacy of Leadership and Innovation

For nearly 70 years, we have been **recognised internationally** as a leader in door entry systems, celebrated for the quality, innovation, reliability, and ease of installation of our products.

Over time, we have expanded our expertise to encompass a **full range of security solutions**, including access control, fire safety systems, video surveillance, home automation and intruder alarms.

Our growth has been strengthened by strategic acquisitions, which, alongside our **research and development** centres in Rovetta, Bergamo, Tunis, and Paris, have established specialised hubs of expertise. These include PAC in the UK, Teletek Electronics in Bulgaria, Blueprint in Italy, and, most recently, Ingenium in Spain.

Today, our global footprint extends far beyond our Rovetta headquarters, **with 9 international subsidiaries, 8 research centres, over 1,000 employees, and a presence in more than 90 countries.** This robust structure enables us to deliver greater value to our partners and end-users alike, fulfilling our commitment to creating a safer world every day.

“The history of Comelit is shaped by the trust and confidence of those who have chosen us for their projects and achievements.”

SINCE **1956**

**10**  
BRANCHES



**90**  
COUNTRIES

**1000**  
EMPLOYEES

**8**  
R&D  
CENTERS

# Security, Technology, and Design at Your Fingertips

Step into a world where cutting-edge security meets sleek design and effortless functionality. The 7TOP IP monitor redefines door entry, delivering a seamless and intuitive experience.

Equipped with a 7-inch touchscreen and an easy-to-navigate interface, the 7TOP enables you to manage entrances, view notifications, and stay in control with just a few taps. Its practicality is enhanced by Wi-Fi connectivity, allowing you to always remain connected and respond remotely via your smartphone, a perfect solution for those seeking convenience without compromising on security.

Every element of the 7TOP is crafted with precision, blending effortlessly into any setting with its modern design and premium materials. This robust device is equally suited to residential and commercial environments, providing a state-of-the-art solution that enhances both security and style.

With the 7TOP, security becomes more than a feature, it's an integral part of your space.

# 7TOP



Intuitive 7-inch touchscreen interface



Integration with voice assistants



Free remote App



Crystal clear video



Italian Design



TP6842	7TOP 7" WI-FI HANDS-FREE VIP DOOR ENT. MONITOR
TP6842BM	7TOP 7" WI-FI HANDS-FREE VIP DOOR ENT. MONITOR, AIL
TP6842B	7TOP 7" WI-FI HANDS-FREE VIP DOOR ENT. MONIT. BLACK



Datasheet



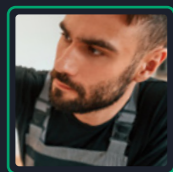
# Designed for Everyone, Optimised for Everyone

The 7TOP interface represents a breakthrough in user-focused design, offering an intuitive experience for both installers and end users. With distinct menus tailored to each profile, the interface uses a unique colour palette for differentiation while maintaining a consistent and intuitive style.

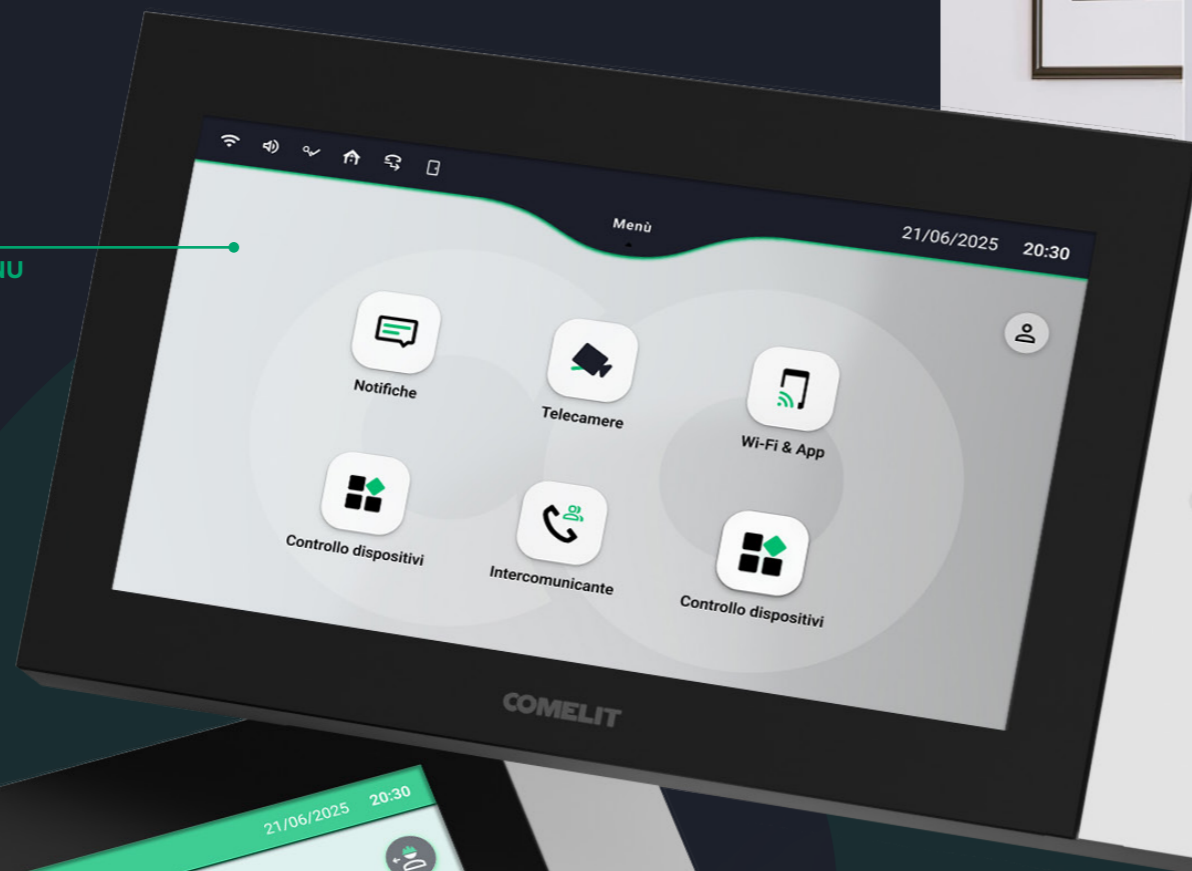
The installer's menu, accessible only via a secure, installer-generated password, ensures maximum protection and control. This thoughtful design simplifies installation and enhances communication between installers and end users, resulting in efficient support and smooth, reliable operation.



END USER MENU



INSTALLER MENU



## The Perfect Solution

The 7TOP is a flawless blend of functionality, inclusiveness, and security, designed to provide a simple and intuitive user experience. Its innovative design combines a touchscreen with a mechanical button, offering a clear visual and functional distinction. This mix of analogue and digital interaction ensures effortless use for everyone, regardless of their technological expertise.

The mechanical button, the centrepiece of interaction, is dedicated to one essential function: opening the door or gate with a single touch, no need to activate the display. Advanced features like programming settings, customizing ringtones, or changing interface colours are managed through the touchscreen. This thoughtful separation of analogue and digital functions provides simplicity and precision for essential tasks, while maintaining flexibility for advanced customisations.

Beyond usability, the 7TOP prioritises digital security. Its encrypted data transmission protocol safeguards against unauthorised access, fully complying with the latest European cybersecurity regulations. This ensures not only functionality and style but also peace of mind for every user.

# Simple, Fast, and Hassle-Free Installation.



The 7TOP is designed to make installation effortless and hassle-free. Its 1.5 mm galvanised steel bracket and quick-release coupling system ensure a straightforward and efficient setup process. Whether mounted on smooth or uneven surfaces, the 7TOP fits seamlessly and elegantly.

Connecting the device is equally simple, just plug the LAN cable directly into the unit, and it's ready to go. This streamlined approach saves valuable time, making the installation of the video door station quick and stress-free. With the 7TOP, you can enjoy the confidence of a perfectly integrated solution without the complexities.

## Why go with an IP Door Entry System?



### REMOVE ANY LIMIT

Eliminate boundaries: unlimited users, scalable connections, and seamless, borderless control. Perfectly suited for any environment, from small buildings to expansive urban complexes.



### OFFER THE BEST

Experience exceptional audio and video quality, ensuring precise identification and seamless communication, regardless of distance or the number of connected users.



### FACIAL RECOGNITION

Facial recognition\* redefines door entry with fast, secure, and keyless entry. This innovation ensures both convenience and protection with just a glance.

\*Functionality available with device 1485.



### FREE APP

Manage your system effortlessly with the free app. Answer calls, manage entrances, and stay connected anytime, anywhere. Simplicity designed to fit seamlessly into your daily life.



### LIFT MANAGEMENT

Easily control lift access through the monitor or with a PIN. For visitors, the lift automatically activates upon access approval, providing seamless convenience and enhanced security.



### VIRTUAL KEYS

Generate unique codes or QR codes for single-use or defined time periods. Ideal for guests or coworking environments, this feature combines maximum security with ultimate flexibility.

# Compact Efficiency, Refined Design

Sonus is a hands-free internal device that seamlessly combines functionality and style in a compact format, making it the perfect choice for those seeking an elegant solution for small spaces. Its sleek square design, available in black or white, blends effortlessly into any setting, while backlit buttons add a touch of modern sophistication.

With hands-free communication, Sonus makes everyday interactions effortless. Responding to visitors, opening doors or gates, and adjusting sound or chimes are all quick, one-touch operations. The privacy function ensures peace of mind, allowing you to mute the ringer and manage access discreetly.

Going beyond basic convenience, Sonus offers three customisable buttons for added functionality, such as switchboard calls, intercom communication, secondary door controls, or common area lighting. Every feature is thoughtfully designed to simplify your life, delivering quality and versatility in a single, stylish solution.

# SONUS



Mechanical buttons



Loud and crystal-clear audio



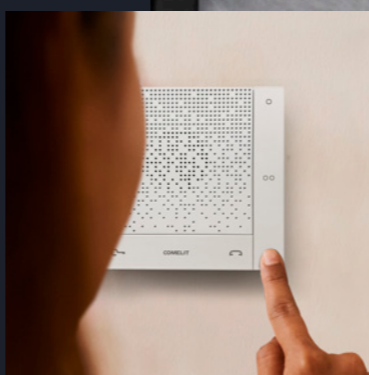
Compact and sturdy



3 programmable buttons



Italian Design



Datasheet



6205W	HANDS-FREE DOOR-ENTRY PHONE, WHITE. VIP
6205B	HANDS-FREE DOOR-ENTRY PHONE, BLACK. VIP

